



PEM® Fastening Solutions for Food Services

If your application requires a fastener to clinch into stainless steel, use PEM® fasteners designed for this purpose. Our specially hardened stainless steel fasteners, including A286 stainless steel, are ideal for food processing equipment and other environments exposed to corrosion.

Features and Benefits

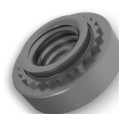
- Creates strong threads in metal as thin as .008"/0.2mm
- Installs into a plain, round hole
- Can be installed using any parallel-acting squeezing force
- Offers high resistance to pushout and torque-out
- Eliminates the need for special hole preparation (e.g., chamfering or deburring)
- Maintains a flush reverse side of the metal sheet
- Reduces installation costs

No Weld Process Concerns

- No weld spatter or cleanliness concerns
- Allows pre-finishing of panels and fasteners
- Avoids thermal stresses that may cause warping
- Enhances fastener positioning accuracy
- Eliminates the need for re-tapping after installation

Talk to an Engineer

To learn more about fastening solutions for stainless steel, [Talk to a PEM® Engineer](#) today.



PEM® Self Clinching Nuts

Provide strong loadbearing internal threads in stainless steel sheets as thin as .025"/0.64mm.



PEM Studs

Permanent installation into stainless steel sheets as thin as .040"/1mm. Offer externally threaded attachment points in two stainless materials.



PEM® Standoffs

For use in stainless steel sheets as thin as .008"/0.2mm and as hard as HRC 37/HB 340 or less. Provide internally threaded fasteners for stacking or spacing applications.



PEM® SpotFast® Fasteners

Provide a solution for flush "face-to-face" sheet attachment in stainless steel.

